

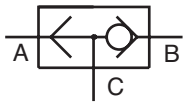
Poppet Type Shuttle Valves

Medium:
Air, Water or Oil

Input Pressure:
21 bar - air; 70 bar - hydraulic

Air Flow:
400 L/min @ 3.5 bar
630 L/min @ 7 bar

Mounting:
Direct or in-line



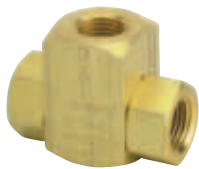
Operation:
Flow from "A" to "C" or "B" to "C"

Pressure to Shift:
35 mbar approx.

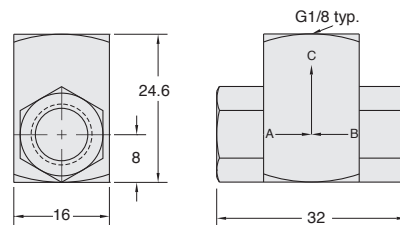
Note:
Shuttle valves should not be used as a pressure selector



G1/8 Poppet Type Valves



Brass body, Delrin Poppet, Nitrile seal



Part No.	Description
M-MJSV-1	Poppet Shuttle Valve, G1/8